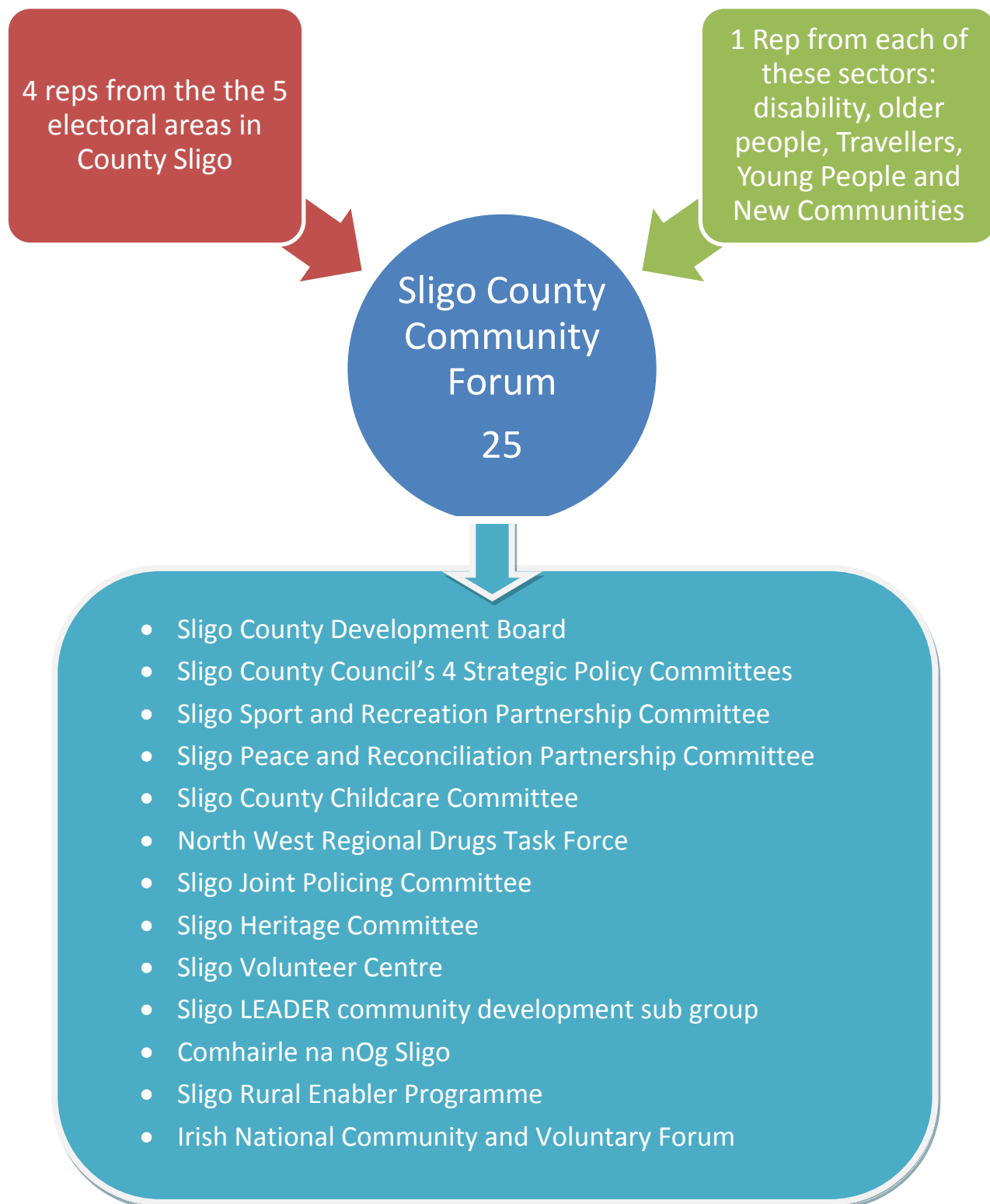


The Sligo County Community Forum Executive

Sligo County Community Forum is governed by an executive committee of 25 volunteer members. They make decisions which guide the work of the forum on an annual basis.. It is through this executive that representatives of the forum are sent to take part in other committees at a county, regional and national level, to bring forward the views of the community and voluntary sector in County Sligo.



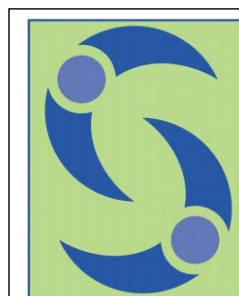
Sligo County Community Forum

Membership Renewal 2012



A Voice for the Community and Voluntary Sector

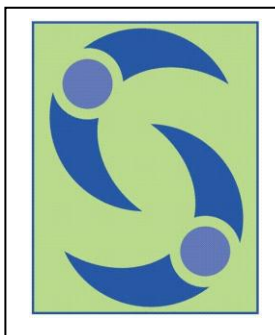
The Sligo County Community Forum, set up in 2000, provides a platform where all community and voluntary groups and organisations can come together to promote a shared vision of how Sligo should be planned, developed and managed. More than 700 community and voluntary groups are members of the Forum. Member groups include those representing residents, older people, childcare, disability, young people, diversity etc. Membership is open to any group that operates on a not-for-profit basis for the benefit of the community.



Supporting Community and Voluntary Groups in County Sligo

As well as representing the views of community groups and organisations in Sligo, Sligo Forum also supports the work of groups by providing training, a monthly E-Bulletin, support with funding applications, help with governance issues and much more. It is our aim in 2012 to become even more responsive to the needs of our members.

Giving a Voice ...



Sligo Forum represents the interests of its members at key levels in the policy development of the county. In doing so, the Sligo County Community Forum seek to ensure that the views of ordinary people, living and working in the county are heard.

Sligo Forum also has representatives taking part in the Irish National Community and Voluntary Forum and other regional boards, so that issues can be brought to a wider audience.

We want to hear from

you ... Contact our staff
Claire Galligan (Development Worker) or Sharon O'Connor (administrator) at Sligo County Community Forum,
Development Centre,
Cleveragh Road, Sligo. Phone 071-9111814 or email soconnor@sligococo.ie.

Aims of Sligo Forum

To represent the community sector on county wide structures

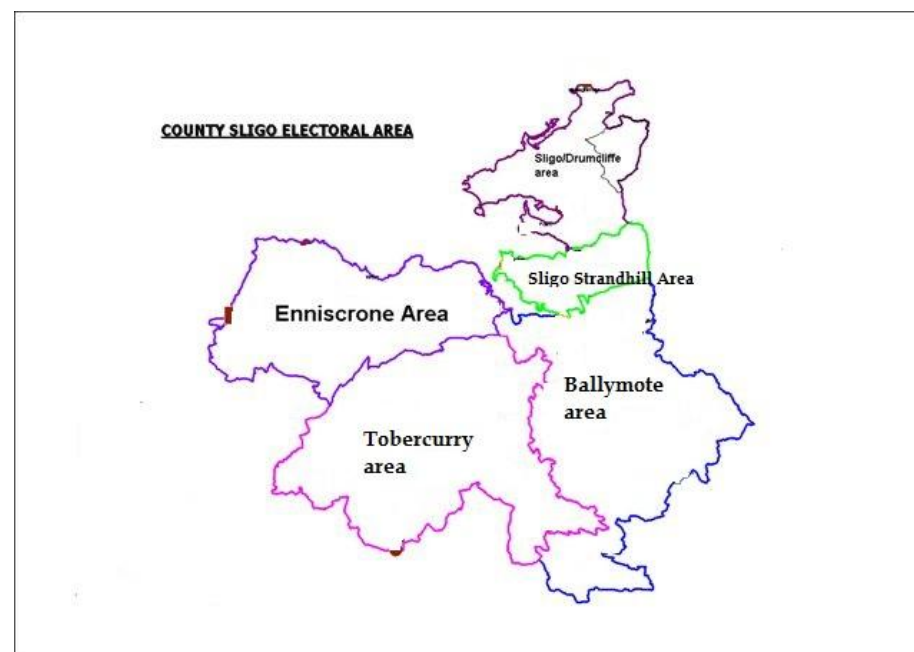
To provide a platform, so that issues can be identified and explored

To network groups in County Sligo

To provide information, training and support to community groups in Sligo

Who represents my group?

The forum executive is made up of 25 individuals who represent community and voluntary groups from all over Sligo. Four representatives are elected from each of the five 'local electoral areas' in County Sligo. Sharon Boles is currently the chairperson of the Sligo Forum.



Services and Support for Members in 2012

- Access to training events and seminars organised by the forum during 2012
- Access to apply for County Council community grants scheme during 2012
- Face to face mentoring support for groups on filling out funding applications
- The promotion of your events on our monthly E-bulletin which has a circulation of over 900 individuals and groups in County Sligo.
- **Participation in the forum executive election which is due to take place in 2012**
- On the phone and email information and support for groups on a range of subjects.
- Access to 'facilitation' hours by a community development professional, for groups to develop strategic plans, set up group structures etc.
- Facility to bring issues to the executive of Sligo County Community Forum by all membership groups, for follow up, advocacy or support.
- Access to a range of resources and information through our website www.sligocommunityforum.com
- Highlighting your community event on our website and facebook pages
- *To get more information about the forum, see who is your local representative or to see our annual reports from 2011 and 2012 log onto our website www.sligocommunityforum.com*

How can I join or renew my membership?

Fill in the form attached and send it back to the forum with €10. Unfortunately, any group that doesn't renew will be taken off the forum 'contact list'

Membership Renewal Form 2012

Name of Group	
Contact Name	
Address	
Email	
Website	
Date Established	

1. Description of group activity

2. Sectors involved in (please tick primary sectors only)

Tourism/ Heritage <input type="checkbox"/>	Health/ Social care <input type="checkbox"/>
Community activities <input type="checkbox"/>	Elderly <input type="checkbox"/>
Youth <input type="checkbox"/>	Children <input type="checkbox"/>
Education <input type="checkbox"/>	Social activities <input type="checkbox"/>
Sports/ recreation <input type="checkbox"/>	Environment <input type="checkbox"/>
Arts/ music/ culture <input type="checkbox"/>	Enterprise <input type="checkbox"/>
Other (Please specify) _____	

3. Structure of group (please tick)

Limited Company Association/ committee Co-operative Trust

4. Structure of group (please tick)

Limited Company Association/ committee Co-operative Trust

5. Do you have a constitution	Yes <input type="checkbox"/>	No <input type="checkbox"/>
6. Do you hold annual general meetings?	Yes <input type="checkbox"/>	No <input type="checkbox"/>
7. Are you a registered charitable organisation?	Yes <input type="checkbox"/>	No <input type="checkbox"/>

8. Number of members (please tick)

1-5 6-10 11-15 16-20 21-50 51-100 100+

9. How often does your group meet?

Weekly Fortnightly Monthly Quarterly Annually

10. Does the group have any employees?

Yes No

If so, how many?

11. Which electoral Area does your group operate in? (please tick)

Dromore Ballymote Tubbercurry Sligo - Strandhill Sligo - Drumcliffe

12. Do you grant permission for this information to be used in a Community Directory to be published by the Community Forum on its website?

Yes No

13. Would you or your group like to receive further information on the special insurance scheme available to members, as negotiated by the Irish National Community and Voluntary Forum?

Yes No

14. As a membership organisation, what supports would you like to receive from the forum? Tick all those which apply.

Information Sharing	Campaigning and Lobbying	
Facilitation Support	Setting up policies and procedures	
Support with Planning	Managing our organisation	
Applying for funding	Social Media Training	
Other training or support needed:		

15. As a membership organisation, are there any community issues of concern you would like to highlight?

16. Are you interested in attending meetings with other forum members to take action on common issues or concerns? Yes No

PLEASE RETURN TO SLIGO FORUM, DEVELOPMENT CENTRE, CLEVERAGH ROAD, SLIGO BEFORE JAN 30TH 2012, WITH €10 CHEQUE MADE PAYABLE TO SLIGO COUNTY COMMUNITY FORUM